

Sydney Showroom:  
Shop 5, 128 Woodville Rd,  
Merrylands, NSW 2160  
**Ph: +612 9788 1471**  
Fax: +612 9788 1472



**ABN: 78 150 757 305**  
**ACN: 150 757 305**  
**Licence #239221C**  
[www.sydneyseal.com.au](http://www.sydneyseal.com.au)  
[info@sydneyseal.com.au](mailto:info@sydneyseal.com.au)

---

## SYDNEY SEAL P/L

### PROJECT REFERENCE

<b>PROJECT</b>	WAGGA WAGGA BASE HOSPITAL
<b>BUILDER</b>	HANSEN YUNCKEN PTY LTD
<b>CLIENT</b>	NSW HEALTH INFRASTRUCTURE
<b>ARCHITECT</b>	BILARD LEECE PARTNERSHIP





Sydney Showroom:  
Shop 5, 128 Woodville Rd,  
Merrylands, NSW 2160  
**Ph: +612 9788 1471**  
Fax: +612 9788 1472



**ABN: 78 150 757 305**  
**ACN: 150 757 305**  
**Licence #239221C**  
[www.sydneyseal.com.au](http://www.sydneyseal.com.au)  
[info@sydneyseal.com.au](mailto:info@sydneyseal.com.au)

---

## SYDNEY SEAL P/L

### PROJECT REFERENCE

<b>PROJECT</b>	WAGGA WAGGA BASE HOSPITAL
<b>BUILDER</b>	HANSEN YUNCKEN PTY LTD
<b>CLIENT</b>	NSW HEALTH INFRASTRUCTURE
<b>ARCHITECT</b>	BILARD LEECE PARTNERSHIP



Sydney Showroom:  
Shop 5, 128 Woodville Rd,  
Merrylands, NSW 2160  
**Ph: +612 9788 1471**  
Fax: +612 9788 1472



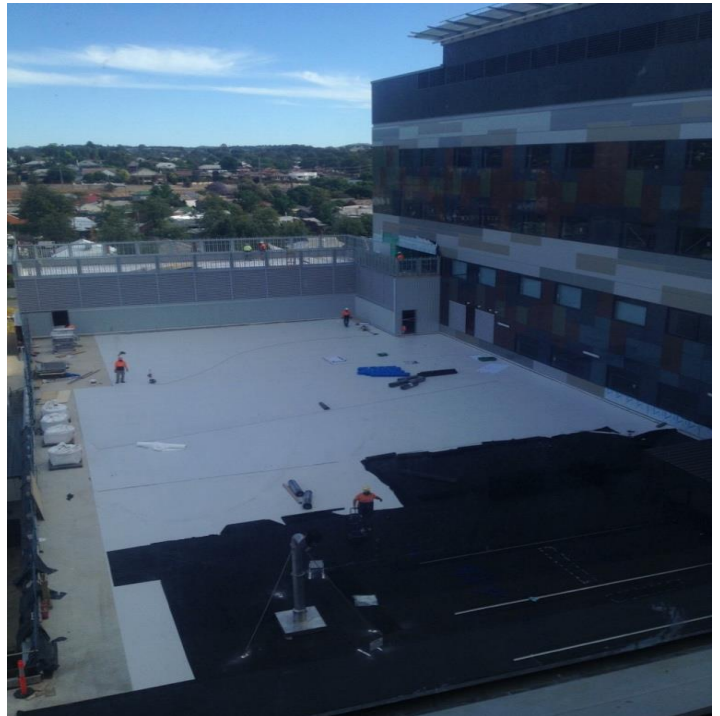
**ABN: 78 150 757 305**  
**ACN: 150 757 305**  
**Licence #239221C**  
[www.sydneyseal.com.au](http://www.sydneyseal.com.au)  
[info@sydneyseal.com.au](mailto:info@sydneyseal.com.au)

---

## SYDNEY SEAL P/L

### PROJECT REFERENCE

<b>PROJECT</b>	WAGGA WAGGA BASE HOSPITAL
<b>BUILDER</b>	HANSEN YUNCKEN PTY LTD
<b>CLIENT</b>	NSW HEALTH INFRASTRUCTURE
<b>ARCHITECT</b>	BILARD LEECE PARTNERSHIP





Sydney Showroom:  
Shop 5, 128 Woodville Rd,  
Merrylands, NSW 2160  
**Ph: +612 9788 1471**  
Fax: +612 9788 1472

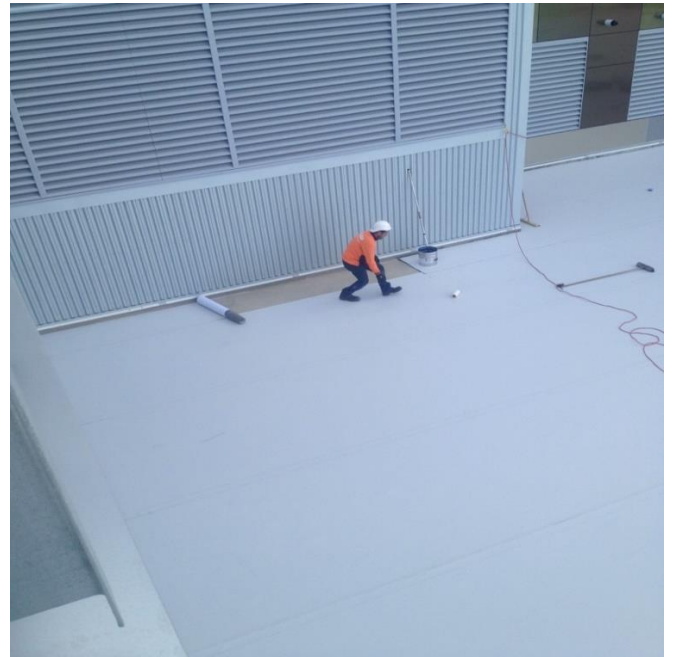
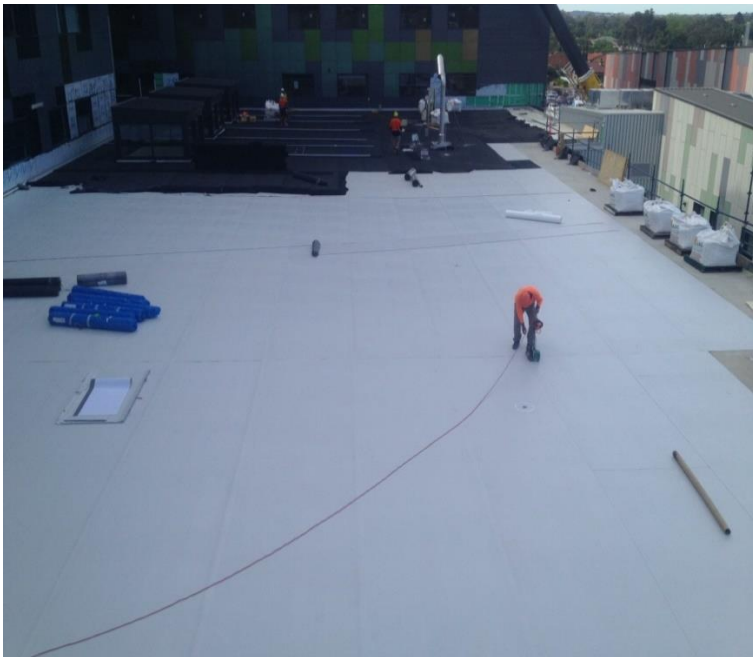


**ABN: 78 150 757 305**  
**ACN: 150 757 305**  
**Licence #239221C**  
[www.sydneyseal.com.au](http://www.sydneyseal.com.au)  
[info@sydneyseal.com.au](mailto:info@sydneyseal.com.au)

## SYDNEY SEAL P/L

### PROJECT REFERENCE

<b>PROJECT</b>	WAGGA WAGGA BASE HOSPITAL
<b>BUILDER</b>	HANSEN YUNCKEN PTY LTD
<b>CLIENT</b>	NSW HEALTH INFRASTRUCTURE
<b>ARCHITECT</b>	BILARD LEECE PARTNERSHIP



Sydney Showroom:  
Shop 5, 128 Woodville Rd,  
Merrylands, NSW 2160  
**Ph: +612 9788 1471**  
Fax: +612 9788 1472



**ABN: 78 150 757 305**  
**ACN: 150 757 305**  
**Licence #239221C**  
[www.sydneyseal.com.au](http://www.sydneyseal.com.au)  
[info@sydneyseal.com.au](mailto:info@sydneyseal.com.au)

## SYDNEY SEAL P/L

### PROJECT REFERENCE

<b>PROJECT</b>	WAGGA WAGGA BASE HOSPITAL
<b>BUILDER</b>	HANSEN YUNCKEN PTY LTD
<b>CLIENT</b>	NSW HEALTH INFRASTRUCTURE
<b>ARCHITECT</b>	BILARD LEECE PARTNERSHIP





Sydney Showroom:  
Shop 5, 128 Woodville Rd,  
Merrylands, NSW 2160  
**Ph: +612 9788 1471**  
Fax: +612 9788 1472



**ABN: 78 150 757 305**  
**ACN: 150 757 305**  
**Licence #239221C**  
[www.sydneyseal.com.au](http://www.sydneyseal.com.au)  
[info@sydneyseal.com.au](mailto:info@sydneyseal.com.au)

---

## SYDNEY SEAL P/L

### PROJECT REFERENCE

<b>PROJECT</b>	WAGGA WAGGA BASE HOSPITAL
<b>BUILDER</b>	HANSEN YUNCKEN PTY LTD
<b>CLIENT</b>	NSW HEALTH INFRASTRUCTURE
<b>ARCHITECT</b>	BILARD LEECE PARTNERSHIP



Sydney Showroom:  
Shop 5, 128 Woodville Rd,  
Merrylands, NSW 2160  
**Ph: +612 9788 1471**  
Fax: +612 9788 1472



**ABN: 78 150 757 305**  
**ACN: 150 757 305**  
**Licence #239221C**  
[www.sydneyseal.com.au](http://www.sydneyseal.com.au)  
[info@sydneyseal.com.au](mailto:info@sydneyseal.com.au)

## SYDNEY SEAL P/L

### PROJECT REFERENCE

<b>PROJECT</b>	WAGGA WAGGA BASE HOSPITAL
<b>BUILDER</b>	HANSEN YUNCKEN PTY LTD
<b>CLIENT</b>	NSW HEALTH INFRASTRUCTURE
<b>ARCHITECT</b>	BILARD LEECE PARTNERSHIP





Sydney Showroom:  
Shop 5, 128 Woodville Rd,  
Merrylands, NSW 2160  
**Ph: +612 9788 1471**  
Fax: +612 9788 1472



**ABN: 78 150 757 305**  
**ACN: 150 757 305**  
**Licence #239221C**  
[www.sydneyseal.com.au](http://www.sydneyseal.com.au)  
[info@sydneyseal.com.au](mailto:info@sydneyseal.com.au)

## SYDNEY SEAL P/L

### PROJECT REFERENCE

<b>PROJECT</b>	WAGGA WAGGA BASE HOSPITAL
<b>BUILDER</b>	HANSEN YUNCKEN PTY LTD
<b>CLIENT</b>	NSW HEALTH INFRASTRUCTURE
<b>ARCHITECT</b>	BILARD LEECE PARTNERSHIP





Sydney Showroom:  
Shop 5, 128 Woodville Rd,  
Merrylands, NSW 2160  
**Ph: +612 9788 1471**  
Fax: +612 9788 1472



**ABN: 78 150 757 305**  
**ACN: 150 757 305**  
**Licence #239221C**  
[www.sydneyseal.com.au](http://www.sydneyseal.com.au)  
[info@sydneyseal.com.au](mailto:info@sydneyseal.com.au)

## SYDNEY SEAL P/L

### PROJECT REFERENCE

<b>PROJECT</b>	WAGGA WAGGA BASE HOSPITAL
<b>BUILDER</b>	HANSEN YUNCKEN PTY LTD
<b>CLIENT</b>	NSW HEALTH INFRASTRUCTURE
<b>ARCHITECT</b>	BILARD LEECE PARTNERSHIP

